

# Coding Transmitters

## Step 17.1 - Storing the Transmitter Code

The opener can only operate from transmitters that have been programmed into its receiver. The receiver needs to learn the codes of any transmitter that will be used with the operator. Up to fourteen (14) codes can be stored in the receiver's memory. Ensure that the battery is inserted into the transmitter.

Press the CODE SET button and release. The CODE SET LED will illuminate to indicate the opener is in Code Learn mode. If a valid code is not stored within 15 seconds the opener will exit Code Learn (**Fig. 33**).

Press the transmitter button (one of four) that you want to control the door. The CODE SET LED will begin to flash.

Press the same transmitter button again. The CODE SET LED will illuminate for one second and then go out.

The transmitter is now coded to operate the door – press the button to test.

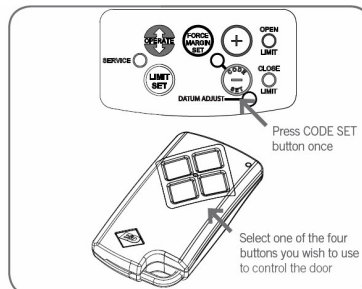


Fig. 33

## Step 17.2 - Setting the Transmitter to Operate the Courtesy Light

Although the courtesy light comes on with each operation of the opener, it may also be controlled by a transmitter without operating the door.

Press the CODE SET button twice. The CODE SET LED will illuminate and the courtesy light will turn on to indicate that the light code learning is active (**Fig. 34**).

Choose a transmitter button not already coded into the receiver. Press this button and the CODE SET LED will begin to flash.

Press the same transmitter button again. The CODE SET LED will illuminate for one second and then go out.

The transmitter is now coded to operate the light – press the button to test.

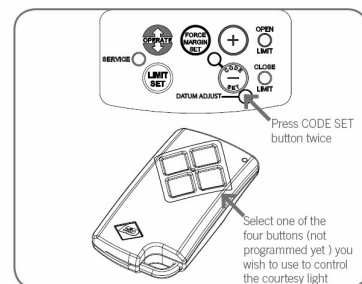


Fig. 34

## Step 17.3 - Setting the Transmitter to Operate Vacation Mode

The opener can be programmed into a "Vacation Mode" where the opener will not respond to any transmitter except one preprogrammed unit.

Press CODE SET button three times. The CODE SET LED will illuminate and the courtesy light will flash slowly (once every two seconds) to indicate Vacation learning mode is active. (**Fig. 35**)

Choose a transmitter button not already coded into the receiver. Press this button and the CODE SET LED will begin to flash.

Press the same transmitter button again. The CODE SET LED will illuminate for one second and then go out, and the courtesy light will also switch off. This indicates the code has been stored (**Fig. 35**).

To activate Vacation Mode, close the garage door and press the coded button transmitter for 5 seconds. The CODE SET LED will illuminate and beep x 2 to indicate that the opener is in Vacation Mode.

To exit Vacation Mode press the transmitter button momentarily until the CODE SET LED turns off and beeps x 1.

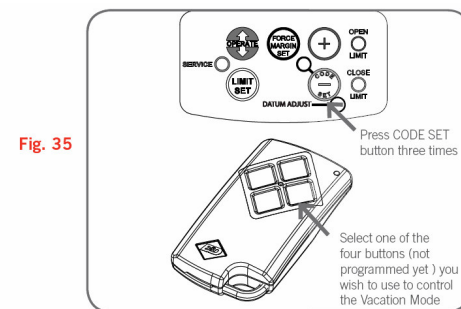


Fig. 35

## Step 17.4 - Setting the Transmitter to Operate the Auxiliary Output

It is possible to operate other devices (e.g. alarm systems) using one of the spare buttons of a multi-channel transmitter coded into the Auxiliary Output feature.

Press CODE SET button four times. The CODE SET LED will illuminate and the courtesy light will flash quickly (twice per second) to indicate that learning mode for the Auxiliary Output is active.

Choose a transmitter button not already coded into the receiver. Press this button and the CODE SET LED will begin to flash.

Press the same transmitter button again. The CODE SET LED will illuminate for one second and then go out, and the courtesy light will also switch off. This indicates the code has been stored (**Fig. 36**).

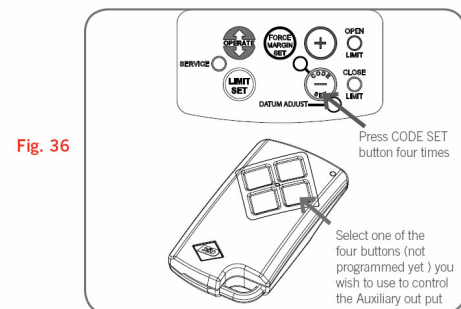


Fig. 36

## Step 17.5 - Setting the Transmitter to Operate Pet (Pedestrian) Mode

The opener can be programmed into a "Pet Mode" where the door opens partially to allow pets to enter/exit the garage:

Press the CODE SET button five times, the CODE SET LED will illuminate and the courtesy light will flash quickly (twice per second) to indicate learning mode for Pet Mode is active.

Choose a transmitter button not already coded into the receiver. Press this button and the CODE SET LED will begin to flash.

Press the same transmitter button again. The CODE SET LED will illuminate for one second and then go out, and the courtesy light will also switch off. This indicates the code has been stored. This indicates the code has been stored (**Fig. 37**).

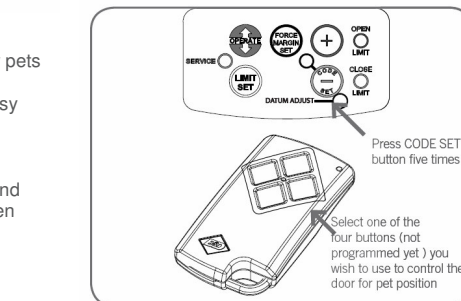


Fig. 37

## Step 17.6 - To Erase Programmed Codes

If the CODE SET button is pressed and held for 6 seconds the CODE SET LED will blink rapidly for one second to indicate that all programmed codes have been erased. (**Fig. 38**)

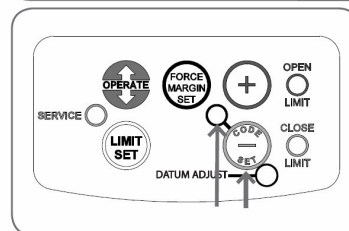


Fig. 38